

Stilista

3.3



**EMBROIDERY
SOFTWARE**
AND MULTI-DECORATION
SIMPLE AND PROFESSIONAL

GMI

Quality and
reliability
made in Italy

NEW USER INTERFACE, MORE INTUITIVE AND EFFICIENT

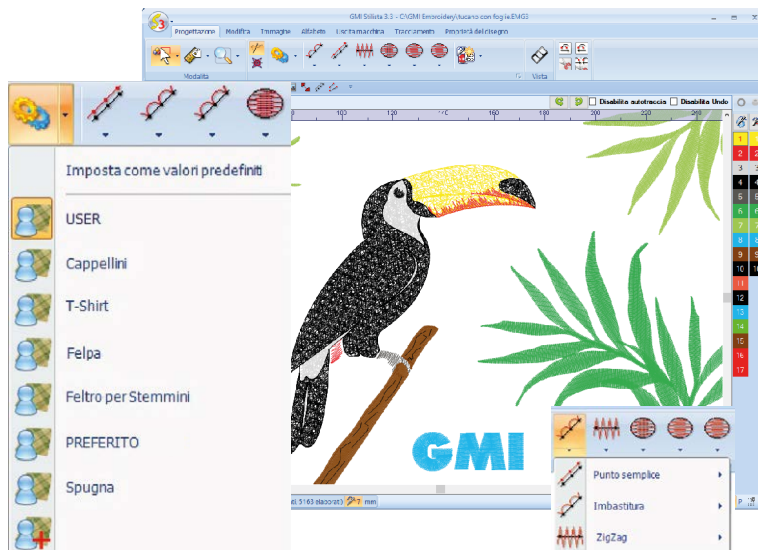
We have reduced the number of visible buttons in the design interface to get a **larger workspace**.

Simple graphic digitizing approach, with the most popular graphic tools (i.e. spline, guidelines, work with objects, etc.).

The user interface is so simple that those who never worked with design programs can be immediately operative.

Personalize the tools bar by adding the most used buttons.

Save **personalized set of parameters** (styles), for faster digitizing.

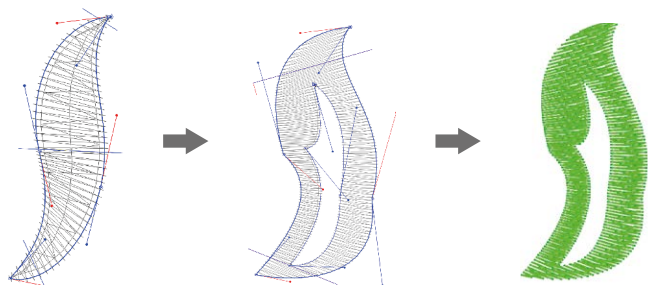


FASTER DIGITIZING FOR PROFESSIONAL AND NEWCOMERS

▶ **NEW** image manipulation tool that reduces/simplify the colors of bitmap images, to use the **autotrace** digitizing tool.

▶ Branched running stitch with automatic return to start point (for accurate double stitch outlines).

▶ Top precise borders' tracing.

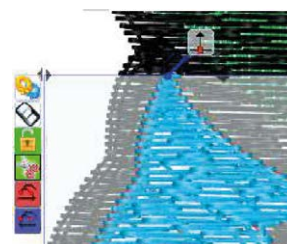


▶ Optimized stitch position.

▶ Edit objects in the film sequence tool.

▶ Auto duplicate and offset layouts.

▶ **NEW** and simplified mode to set color change, lock stitch and thread cut, that are now properties of the object.

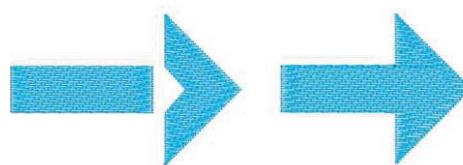


▶ **NEW** graphic workspace specifically dedicated to vector images: the vector design can be edited independently from the embroidery design.

▶ Automatically convert any Windows True Type Fonts to stitches.



▶ **NEW** shaping tool: weld, trim, brake apart.



5 GOOD REASONS TO USE STILISTA 3.3

1 ▶ **ENHANCE PRODUCTIVITY** with many automatic tools, personalized parameters and intuitive interface

2 ▶ **GET HIGHEST QUALITY** with advanced stitch calculation and professional parameters wizard

3 ▶ **MORE FLEXIBILITY** any time you can transform/edit the stitch type and the type of processing (embroidery/laser/rhinestones)

4 ▶ **PROFESSIONAL EDUCATION**

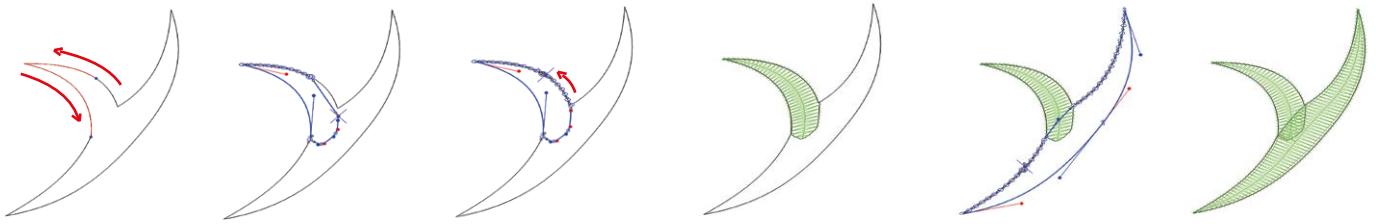
with individual and custom made classes made by our personnel, you will soon start designing!

5 ▶ **SUPPORT SERVICE** our experts will answer your questions and support you remotely and at the phone



AUTOMATIC DIGITIZING FROM VECTOR DRAWING

- ▶ Import and **autotrace** vector designs; control the digitizing with the possibility to unlock the auto-tracing and continue to draw manually with the graphic drawing tools.

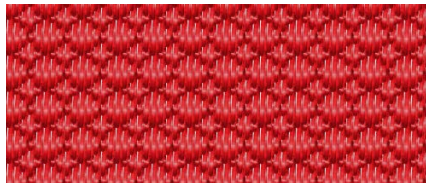


- ▶ **Autopunch** of vector images with full control of digitizing: the operator can select which parts of the designed will be autopunched and he can split the outlines, draw angle lines, complex fill with holes, organize the sequence, automatic entry and exit stitches.



FASCHION TOOLS

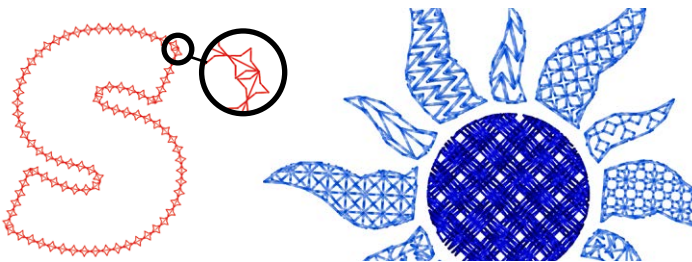
- ▶ 380 Underlay motifs and possibility to create yours.



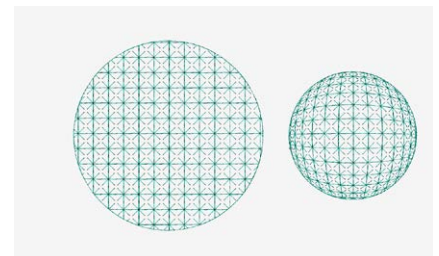
- ▶ Automatic Appliqué with appliqué background.



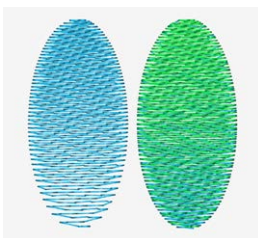
- ▶ 380 Border and fill motifs and possibility to create yours.



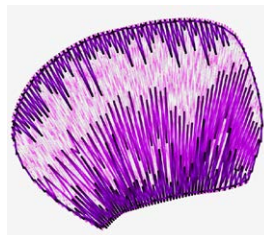
- ▶ 3D effects.



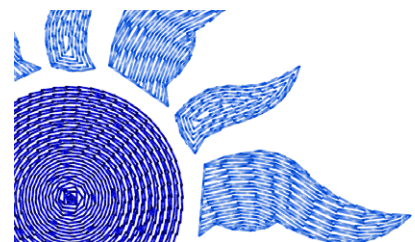
- ▶ Degradè.



- ▶ Jagged.



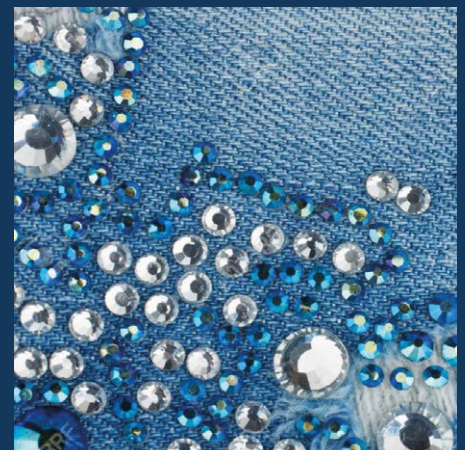
- ▶ Concentric and curved fill.



ADD MORE VALUE TO YOUR DESIGNS WITH THE MULTI-DECORATION TOOLS

Any time you can add the functions to draw rhinestone and laser designs.

Or you can get the software to draw solely rhinestones designs, compatible with the most popular automatic **rhinestone** setting machines, **plotter laser**, cutters or for manual processing.

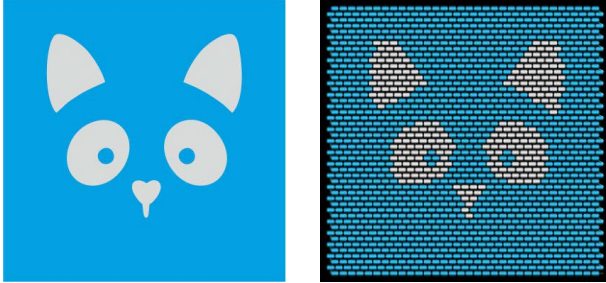


SEQUINS AND BEADING FUNCTIONS

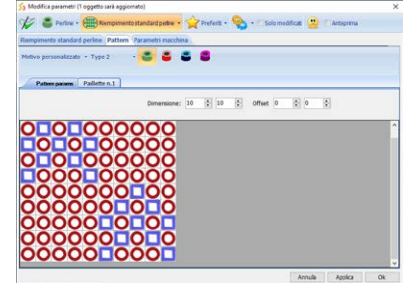
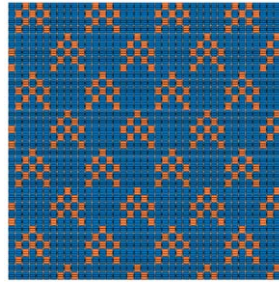
Create design for embroidery machines with single and multi-sequins device, single and twin beading devices.

Get professional results in short time!

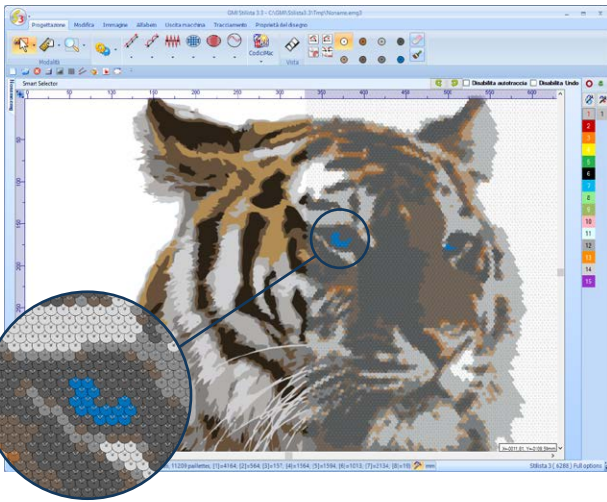
- ▶ Automatically recognize colors and convert images into sequins/beading objects.



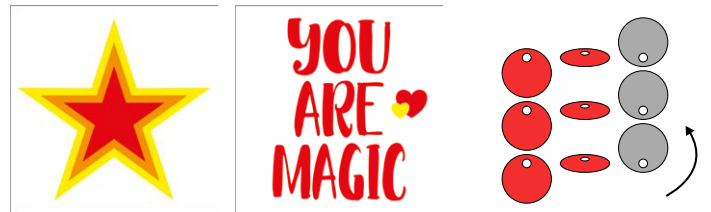
- ▶ Custom sequins/beads patterns (set different size, colors and shapes).



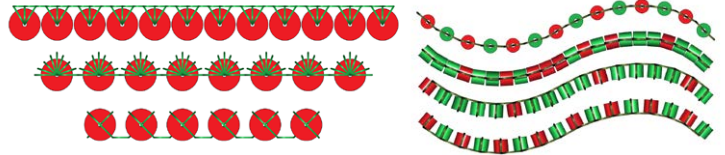
- ▶ "Color match" function to convert images into sequins designs.



- ▶ Flip sequins with automatic conversion of different front and rear designs.



- ▶ Pre-set and custom sequins styles for tack down stitches.



- ▶ Display sequins/beads while digitizing outlines and in the worksheet.

- ▶ Automatic adjustment of drop stitches (always from north to south, no matter the sequins direction).

- ▶ Brush tool, to easily change sequins/beads color/shape/size.

- ▶ Eraser tool, to easily erase stitches or sequins/beads drops.

GMI Library

Integrated design library that indexes embroidery files, images and relevant documents.



GMI srl has been producing professional embroidery and laser design software since 1980; the GMI Academy and its agents have trained thousand of operators.

It has been producing laser cutting systems for over 20 years.

It counts thousand of laser systems installed worldwide.

GMI s.r.l.

Address: Via A. Meucci 36
Vittorio Veneto (TV) ITALIA
Tel: +39 0438 556299
E-mail: info@gmi.it
Web: www.gmi.it